

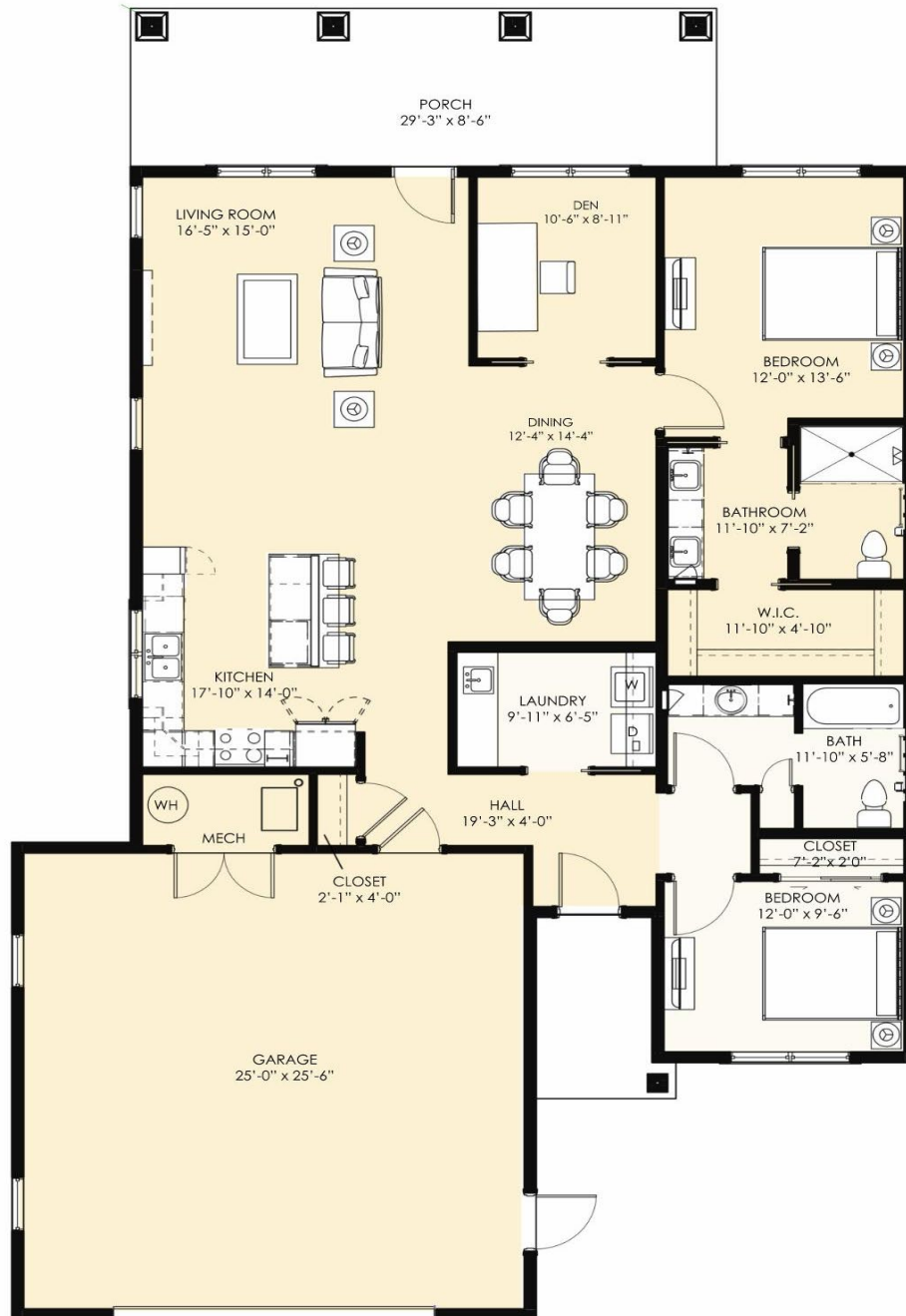
East Bay ~ Cottage Home C

Two-Bedroom + Den, Two-Bath

covenant  living
of the GREAT LAKES

1,634 sq. ft.

Dimensions are approximate.
Individual room sizes shown.



Dimensions and layout are proposed and conceptual only, and are based upon preliminary development plans which are subject to withdrawal, revisions and other changes.

2510 Lake Michigan Drive NW, Grand Rapids, MI 49504 (616) 735-6080 CovLivingGreatLakes.org

Covenant Living Communities & Services does not discriminate pursuant to the federal Fair Housing Act.
All faiths and beliefs are welcome.

